

S a k s ı

Güçlü bitkiler için sağlam bir başlangıç

www.sunteknik.com.tr



A solid start for strong plants

Sun Teknik
F i b e r g l a s



 @sunteknik_fiberglas


 @sunteknikfiberglas



Fiberglass Planter
Fiberglas Pflanzkübel



What is Fiberglass?



It is obtained by wetting fiberglass (FRP) glass fiber with polyester resin and chemically hardening. It has 4 times more tensile strength against steel. In parallel with the developing technology, positive developments are made in this sector and new application methods are discovered. The application areas of Fiberglass in our country are mainly water, food and chemical storage and transport tanks, prefabricated huts and buildings, roof plates, chemical transfer pipes, thermal water pipes, various marine vehicles (Boat canoe bikes etc.); building decorations, bath tubs, shower trays, concrete and plaster molds, kitchen countertops, doors and windows and all other products made of imaginable wood and metal can also be produced from fiberglass.

Özellikler / Specs

 %100 Hand made
 UV Resistant

 Frost resistant
 Lightweight

 Durable
 3 Years Guarantee

 2K Acrylic Paint
 RAL Colors

Fiberglas Nedir?

Cam elyaf (FRP) cam elyafının polyester reçine ile ıslatılması ve kimyasal olarak sertleştirilmesi ile elde edilir. Çeliğe karşı 4 kat daha fazla çekme dayanımına sahiptir. Gelişen teknolojiye paralel olarak bu sektörde olumlu gelişmeler yaşanmakta ve yeni uygulama yöntemleri keşfedilmektedir. Fiberglass'ın ülkemizdeki uygulama alanları başlıca su, gıda ve kimyasal depolama ve taşıma tankları, prefabrik baraka ve binalar, çatı levhaları, kimyasal transfer boruları, termal su boruları, çeşitli deniz taşıtları (Tekne kano bisikletleri vb.); bina dekorasyonları, banyo küvetleri, duş tekneleri, beton ve alçı kalıpları, mutfak tezgahları, kapı ve pencereler ve ahşap ve metalden akla gelebilecek diğer tüm ürünler de fiberglastan

Was Ist Fiberglas?

Es wird erhalten, indem Fiberglas (GFK) mit Polyesterharz benetzt und chemisch ausgehärtet wird. Es hat eine viermal höhere Zugfestigkeit gegenüber Stahl. Parallel zur Entwicklungstechnologie werden in diesem Bereich positive Entwicklungen gemacht und neue Applikationsmethoden entdeckt. Die Verwendungsbereich von Fiberglas in unserem Land sind hauptsächlich Wasser-, Lebensmittel- und Chemikalienlager und Transporttanks, vorgefertigte Hütten und Gebäude, Dachplatten, chemische Transferrohre, Thermalwasserrohre, verschiedene Seefahrzeuge (Bootskanuräder usw.); Baudekorationen, Badewannen, Duschwannen, Beton- und Gipsformen, Küchenarbeitsplatten, Türen und Fenster sowie alle anderen Produkte aus Holz und Metall können ebenfalls aus Glasfaser produziert werden.

Nasıl Yapıyoruz?



Kalıp Uygulama

Mold applying

Formanwendung

How do we do it?



Zımpara

Sanding - trimming

Schleifen - Trimmen

Wie machen wir es?



Boyamaya hazırlık

Paint preparing

Malen vorbereiten



Boyama

Painting

Malen





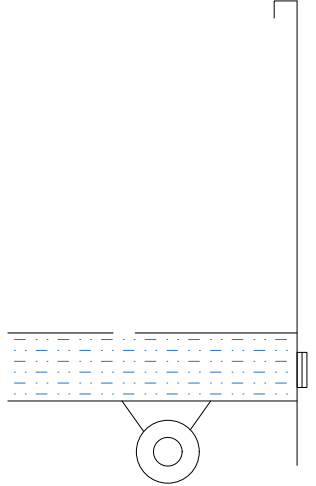





Ürün

Product

Produkt

Yüzeyler / Finishes / Oberfläche

Opsiyonel

Standart		<ul style="list-style-type: none">- İç ve dış hava ortamlara dayanıklı 2K Acrylic boya- RAL Kataloğundaki tüm renkler- Müşteri özel renkleri	 <p>Endüstriyel gizli tekerlek 55mm Industrial hidden wheel 55mm Industrielles verstecktes Rad 55mm</p>  <p>Su haznesi Water reservoir Wasser reservoir</p> <p>Tapa Plug Stecker</p>
Concrete-Like		<ul style="list-style-type: none">- Müşteri özel yüzeyleri- Kişiselleştirilmiş yüzey desenleri	
Patina		 2k Acrylic PAINT	
Glossy		<ul style="list-style-type: none">- 2K Acrylic paint resistant to indoor and outdoor weather conditions- All colors in the RAL Catalogue- Customer specific colors	
Poli-Corten		<ul style="list-style-type: none">- Customer specific surfaces- Personalized surface patterns	

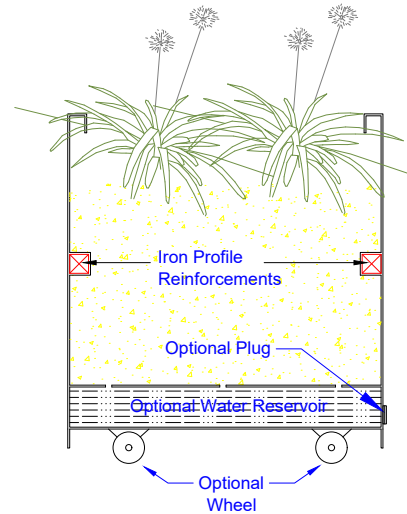
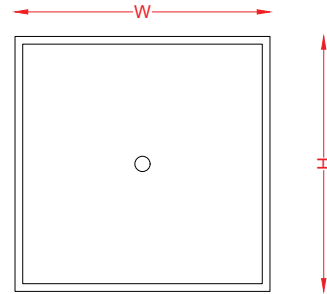
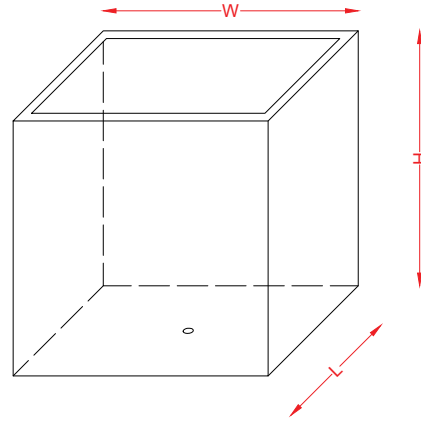
C u b e

Standart Ölçüler

Standart Dimensions

Standart Maße

WxLxH (cm)	Volume (Full)
30x30x30	27,0 Lt
40x40x40	64,0 Lt
50x50x50	125,0 Lt
60x60x60	216,0 Lt
70x70x70	343,0 Lt
80x80x80	512,0 Lt
90x90x90	729,0 Lt
100x100x100	1000,0 Lt



Sun Teknik
F i b e r g l a s

Kübik kare modellerimiz boyut ve renk olarak rahatlıkla özelleştirebileceğiniz, sade ve basit tasarım düşündüğünüz ortamlarınız için mükemmel bir tercihtir. Özellikle yaya trafiği yoğun olan iç ve dış mekanlarda, otel, restoran, cafe, AVM, perakende mağazaları, tema parkları gibi alanlar için idealdir. Kübik kare saksılarımızla mekanlarınızın boş alanlarını görsel olarak mükemmel bir şekilde doldurursunuz. En küçüğünden en büyüğüne kadar her türlü bitki ve ağaç dikimi için sonsuz peyzaj çözümleri elde edersiniz. Dış mekanlarınızda güneş, yağmur, kar ve dondan etkilenmeyen yapısıyla yıllar boyu sorunsuz kullanabilirsiniz.

Our square and conical square models are the perfect choice for your surroundings. They are used with different colors and shapes for a simple design. It is ideal for places such as hotels, restaurants, cafes, shopping centers, retail stores and theme parks. With our cubic square pots you furnish the rooms in a modern way. You get endless landscape solutions for all types of plants and trees, from the smallest to the largest. You can keep it for years without any problems. They are not affected by sun, rain, snow and frost.

Unsere quadratischen und konischen quadratischen Modelle sind die perfekte Wahl für Ihre Umgebungen. Sie werden mit verschiedenen Farben und Formen für ein schlichtes Design benutzt. Es ist ideal für Plätze wie Hotels, Restaurants, Cafés, Einkaufszentren, Einzelhandelsgeschäfte und Themenparks. Mit unseren kubischen quadratischen Töpfen richten Sie die Räume modern ein. Sie erhalten endlose Landschaftslösungen für alle Arten von Pflanzen und Bäumen, vom kleinsten bis zum größten. Sie können es jahrelang ohne Probleme aufbewahren. Sie werden nicht durch Sonne, Regen, Schnee und Frost ausgewirkt.



Recte

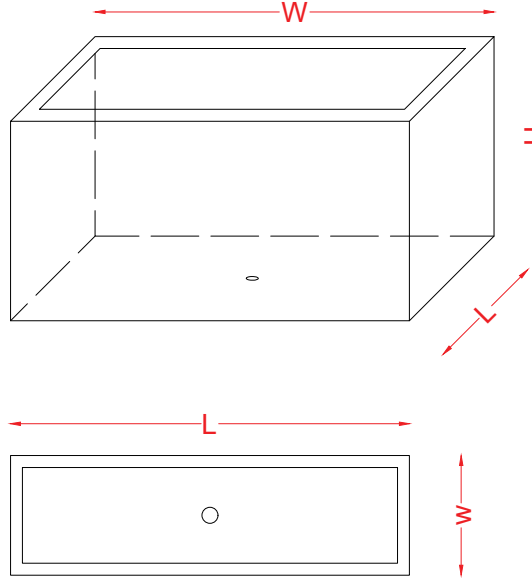
Sun Teknik
Fiberglass

Standart Ölçüler

Standart Dimensions

Standart Maße

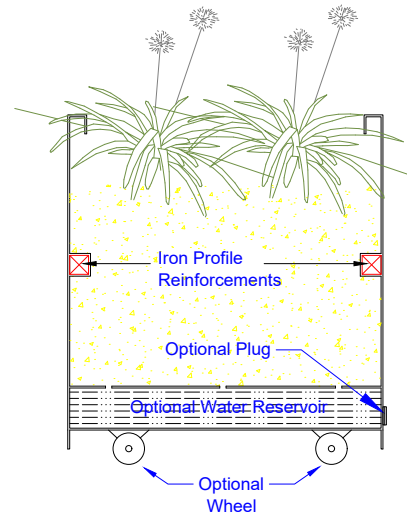
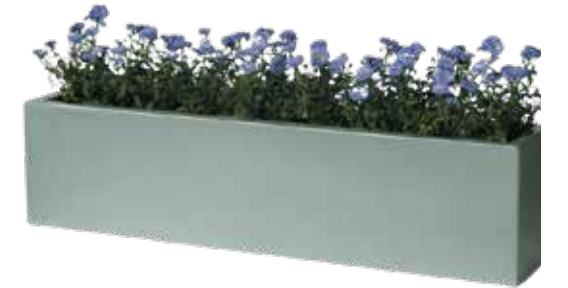
WxLxH (cm)	Volume (Full)
100X50X50	250,0 Lt
125X50X50	312,5 Lt
150X50X50	375,0 Lt
100X40X50	200,0 Lt
125X40X50	250,0 Lt
150X40X50	300,0 Lt
100X50X40	200,0 Lt
125X50X40	250,0 Lt
150X50X40	300,0 Lt
100X30X50	150,0 Lt
125X30X50	187,5 Lt
150X30X50	225,0 Lt
100X30X40	120,0 Lt
125X30X40	150,0 Lt
150X30X40	180,0 Lt



Şık olduğu kadar çok işlevli olan dikdörtgen saksılar hem iç hem de dış mekanlarda yeşillik katmanının harika bir yoludur. Aynı zamanda mahremiyet oluşturmak ve cafe, restaurant sınırları, teraslar, havuz alanları, balkonlar, çatı katlarının etrafındaki kenarlık sınırları ve diğer alanları ayırmak için çok iyi bir seçenektir. Bunun yanında modern ve zarif görüntüsü ile de mekanlarınızı son derece yaşanır kılar. Fiberglas yapısından dolayı dış hava şartlarından etkilenmeden yıllarca özelliğini koruyarak bitkilerinize ev sahipliği yapar. Diğer tüm saksılarımızda olduğu gibi dikdörtgen saksılarımız da renk ve boyut açısından son derece fazla seçeneklere sahiptir.

Rectangular pots that are both multifunctional and stylish are ideal for showing a lot of green indoors and outdoors. It is also a very good option to separate the cafe, restaurant, patios, pool, balcony and border areas. It also makes your rooms with it's modern and elegant appearance extremely homely.

Rechteckige Töpfe, die sowohl multifunktional als auch stilvoll sind, eignen sich hervorragend, im Innen und Außenbereich viel Grün zu zeigen. Es ist auch eine sehr gute Option zur Trennung der Café, Restaurant, Terrassen, Pool, Balkon und Grenzbereichen. Darüber hinaus macht es Ihre Räume mit seiner modernen und eleganten Erscheinung äußerst wohnlich.



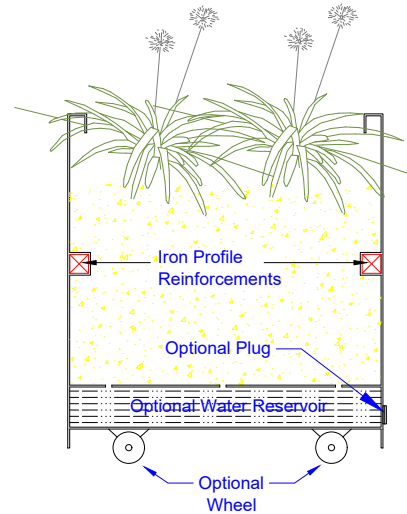
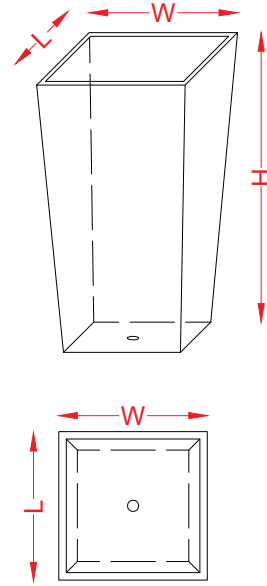
K a r e k o

Standart Ölçüler

Standart Dimensions

Standart Maße

WxLxH (cm)	Volume (Full)
40X40X75	120,0 Lt
30X30X60	54,0 Lt
50X50X45	112,5 Lt
50X50X90	225,0 Lt
70X70X70	343,0 Lt
70X70X80	392,0 Lt
100X100X60	600,0 Lt



Sun Teknik

F i b e r g l a s



Kare konik saksılar son derece zarif ve modern tasarımlardır. Dış mekanlarınızda bitkilerinizle ortamı ısıtırken, konik saksılar ile de renk ve hareket katarsınız. Saksılarımızı güneş, yağmur, kar ve dondan etkilenmeyen yapıyla yıllar boyu sorunsuz kullanabilirsiniz.

Tapered square pots are extremely elegant and modern designs. While you warm the environment with your plants in your outdoor spaces, you add color and movement with tapered pots. You can use our pots without any problems for years with their structure that is not affected by sun, rain, snow and frost.

Quadratische konische Blumentöpfe sind äußerst elegant und modern gestaltet. Während Sie die Umgebung mit Ihren Pflanzen in Ihren Außenbereichen erwärmen, können Sie mit konischen Töpfen Farbe und Bewegung hinzufügen. Sie können unsere Töpfe jahrelang problemlos verwenden, da ihre Strukturen nicht durch Sonne, Regen, Schnee und Frost beeinträchtigt werden.



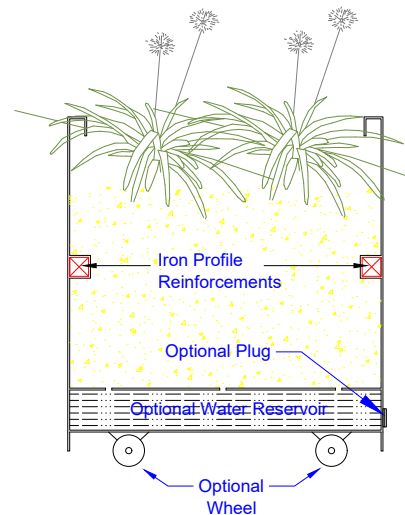
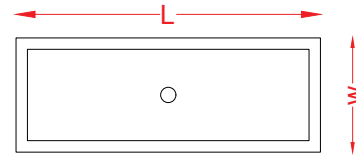
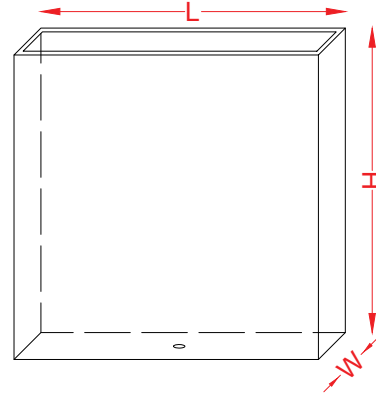
Separator

Standart Ölçüler

Standart Dimensions

Standart Maße

LxWxH (cm)	Volume (Full)
80x30x80	192,0 Lt
70x30x70	147,0 Lt
60x30x60	108,0 Lt
80x40x80	256,0 Lt
70x40x70	196,0 Lt
60x40x90	216,0 Lt
80x35x80	224,0 Lt
70x35x70	171,5 Lt
60x35x90	189,0 Lt
90x40x90	324,0 Lt



Sun Teknik
F i b e r g l a s



Separator saksılar komşu mekanları birbirinden ayırarak mahremiyet sağlamak ve görünürlüğü engellemek için son yılların en favori, aynı zamanda modern görünümlü ve mekanların konseptini değiştirerek güzelleştiren modellerdir. İş yeri, restaurant, cafe vb oturma alanlarını, ev teraslarını ve balkonlarını estetik bir

Separator flower pots are the most favorite of recent years, also modern looking and changing the concept of spaces to provide privacy and prevent visibility by separating neighboring spaces. beautifying models. They separate sitting areas, home terraces and balconies in an aesthetic way.

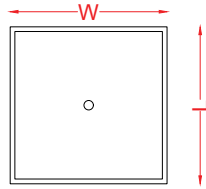
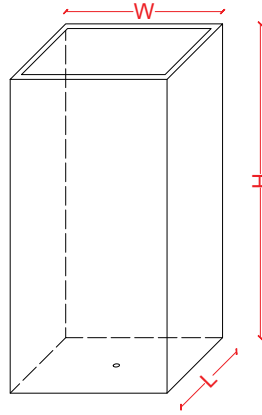
Separator-Blumentöpfe sind die beliebtesten der letzten Jahre, sehen auch modern aus und verändern das Raumkonzept, um Privatsphäre zu bieten und die Sichtbarkeit zu verhindern, indem benachbarte Räume getrennt werden. Modelle verschönern. Sie trennen auf ästhetische Weise Sitzecken, heimische Terrassen und Balkone.



Tower

Sun Teknik
Fiberglass

Standart Ölçüler
Standart Dimensions
Standart Maße



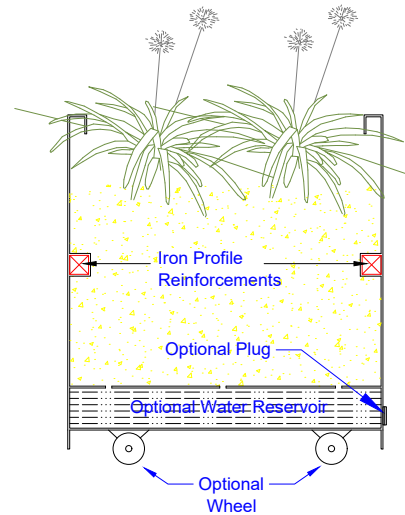
WxLxH (cm)	Volume (Full)
30x30x60	54,00 Lt
30x30x70	63,00 Lt
30x30x80	72,00 Lt
40x40x70	112,00 Lt
40x40x80	128,00 Lt
40x40x100	160,00 Lt
40x40x120	192,00 Lt
50x50x80	200,00 Lt
50x50x100	250,00 Lt
50x50x120	300,00 Lt



Tower saksılar dar alanlarınızı bitkilendirerek geniş etkiler oluşturmak için tasarlanmış, aynı zamanda sade bir modernlik katan basit çizgili ve fonksiyonel ürünlerdir.

Tower flower pots are simple lined and functional products that are designed to create wide effects by planting your narrow spaces, while adding a simple modernity at the same time.

Tower-Blumentöpfe sind einfach gefütterte und funktionelle Produkte, die entworfen wurden, um breite Effekte zu erzielen, indem sie Ihre engen Räume bepflanzen, während sie gleichzeitig eine einfache Modernität hinzufügen.



Silindro

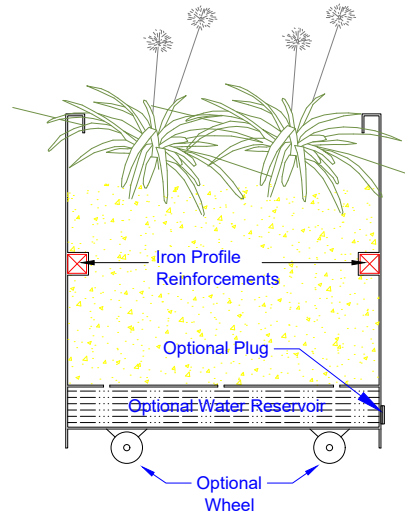
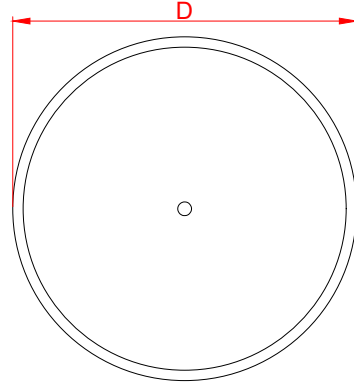
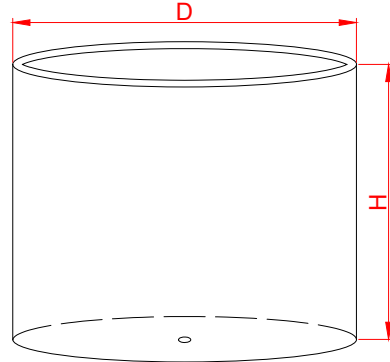
Sun Teknik
Fiberglass

Standart Ölçüler

Standart Dimensions

Standart Maße

DxH (cm)	Volume (Full)
30x40	28,27 Lt
33x45	38,48 Lt
40x40	50,27 Lt
50x80	157,00 Lt
60x60	169,65 Lt
80x45	226,00 Lt
100x60	470,00 Lt
100x80	628,00 Lt
125x125	1530,00 Lt
150x80	1410,00 Lt



Basit silindirik şekilleriyle, Modern Yuvarlak Saksılarımız iç ve dış mekanlar için çok yönlü peyzaj tasarım çözümleridir. Bu fiberglass saksıların yumuşak yapısı, gelenekselden geçişe ve modernden tüm tasarım temalarına sorunsuzca uyumlarını sağlar. İç ve dış mekanlarda rahatlıkla kullanabileceğiniz yuvarlak saksılar peyzaj mimarları tarafından özellikle geniş alanların bitkilendirilmesinde ve çok büyük bitki ve ağaçların dikimi için tercih edilir. Fiberglass yapısından dolayı dış hava şartlarından etkilenmeden yıllarca özelliğini koruyarak bitkilerinize ev sahipliği yapar. Diğer tüm saksılarımızda olduğu gibi silindirik saksılarımız da renk ve boyut açısından son derece fazla seçeneklere sahiptir.

With their simple cylindrical shapes, our Modern Round Pots are versatile landscape design solutions for indoor and outdoor spaces. The soft nature of these fiberglass pots allows them to blend seamlessly with transition from traditional and from modern to all design themes. Round pots that you can easily use indoors and outdoors are preferred by landscape architects especially for planting large areas and planting very large plants and trees. Due to its fiberglass structure, it keeps its properties for years without being affected by external weather conditions and hosts your plants. Like all our other pots, our cylindrical pots have also extremely many options in terms of color and size. Due to its fiberglass structure, it keeps its properties for years without being affected by external weather conditions and hosts your plants.

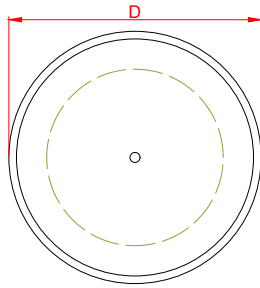
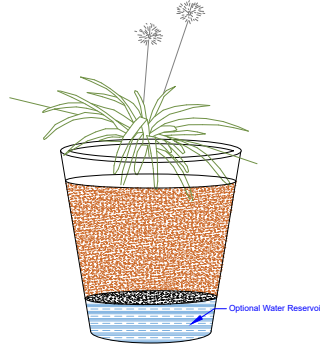
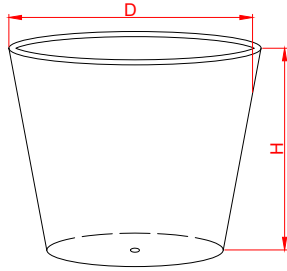
Mit ihren einfachen zylindrischen Formen sind unsere modernen runden Blumentöpfe vielseitige Landschaftsgestaltungslösungen für Innen- und Außenräume. Die Weichheit dieser Glasfaser-Blumentöpfe ermöglicht es ihnen, sich nahtlos mit traditionellem Übergang und modernem Design für alle Designthemen zu verbinden. Runde Töpfe, die Sie problemlos im Innen- und Außenbereich verwenden können, werden von Gartenbauarchitekten bevorzugt, insbesondere zum Pflanzen großer Flächen und zum Pflanzen sehr großer Gewächsen und Bäume. Aufgrund ihrer Glasfaserstruktur halten sie Ihre Pflanzen jahrelang zu Hause, ohne von äußeren Wetterbedingungen beeinflusst zu werden. Wie bei allen unseren anderen Blumentöpfen bieten unsere zylindrischen Blumentöpfe äußerst viele Optionen in Bezug auf Farbe und Größe. Aufgrund seiner Glasfaserstruktur hält es Ihre Pflanzen jahrelang zu Hause,



Arrow

Standart Ölçüler Standart Dimensions Standart Maße

DxH (cm)	Volume (Full)
36X68	69,22 Lt
47X90	156,15 Lt
40x105	57,73 Lt
45x25	75,40 Lt
50x70	131,95 Lt
60x60	39,76 Lt
70x35	107,99 Lt
80x70	137,44 Lt
100x80	113,00 Lt
125x75	169,65 Lt
150x80	134,70 Lt

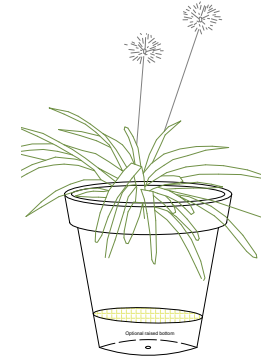
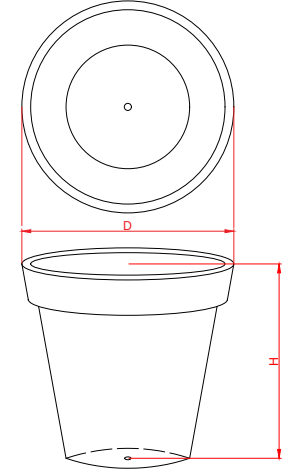


Belted Arrow

DxH (cm)	Volume (Full)
60X50	141,37 Lt
50X80	157,08 Lt
80x75	351,86 Lt
100X90	706,86 Lt
120X110	1244,07 Lt



Sun Teknik Fiberglass



Hem iç hem de dış mekanlarda kullanabileceğiniz, büyük bitkileri de rahatça dikebileceğiniz, silindire göre daha modern ve zarif görünümlü dekoratif saksılardır. İç ve dış mekanlarda rahatlıkla kullanabileceğiniz yuvarlak konik saksılar peyzaj mimarları tarafından özellikle geniş alanların bitkilendirilmesinde ve çok büyük bitki ve ağaçların dikimi için tercih edilir. Özellikle AVM, otel, havaalanı gibi geniş alanlara sahip binalarda çok sıkça talep görürler. Fiberglas yapısından dolayı dış hava şartlarından etkilenmeden yıllarca özelliğini koruyarak bitkilerinize ev sahipliği yapar. Diğer tüm saksılarımızda olduğu gibi yuvarlak konik saksılarımız da renk ve

Es handelt sich um dekorative Blumentöpfe, die Sie sowohl drinnen als auch draußen verwenden können, wo Sie problemlos auch große Pflanzen haben können und die moderner und eleganter aussehen als der Zylinder. Rundkegelblumentöpfe, die Sie drinnen und draußen verwenden können, werden von Gartenbauarchitekten bevorzugt, insbesondere zum Pflanzen großer Flächen und zum Pflanzen sehr großer Gewächse und Bäume. Sie sind häufig bevorzugt, insbesondere in Gebäuden mit großen Flächen wie Einkaufszentren, Hotels und Flughäfen. Aufgrund ihrer Glasfaserstruktur hält es Ihre Pflanzen jahrelang zu Hause, ohne von äußeren Wetterbedingungen beeinflusst zu werden. Wie bei allen unseren anderen Blumentöpfen bieten unsere zylindrischen Blumentöpfe äußerst viele Optionen in Bezug auf Farbe und Größe.

With a more modern and elegant appearance than the cylinder, they are decorative pots that you can use both indoors and outdoors, where you can easily plant large plants. Tapered round pots that you can easily use indoors and outdoors are preferred by landscape architects especially for planting large areas and planting very large plants and trees. They are frequently in demand especially in buildings with large areas such as shopping malls, hotels, airports, etc. Due to its fiberglass structure, it keeps its properties for years without being affected by external weather conditions and hosts your plants. Like all our other pots, our cylindrical pots have also extremely many options in terms of color and size.

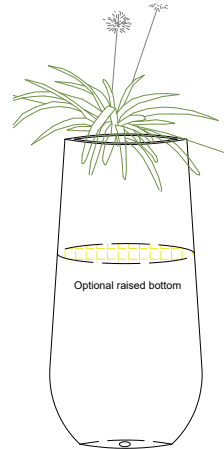
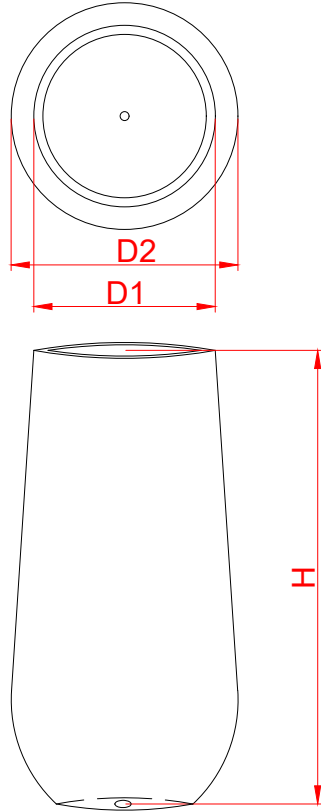
Drop

Standart Ölçüler
Standart Dimensions
Standart Maße

D1 (cm)	D2 (cm)	H (cm)	Volume (Full)
40	50	100	94,25 Lt
30	40	75	196,35 Lt



New



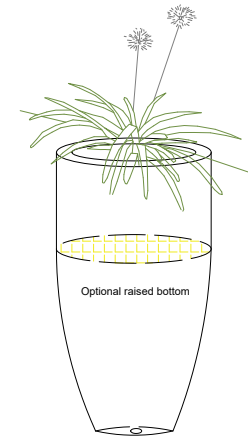
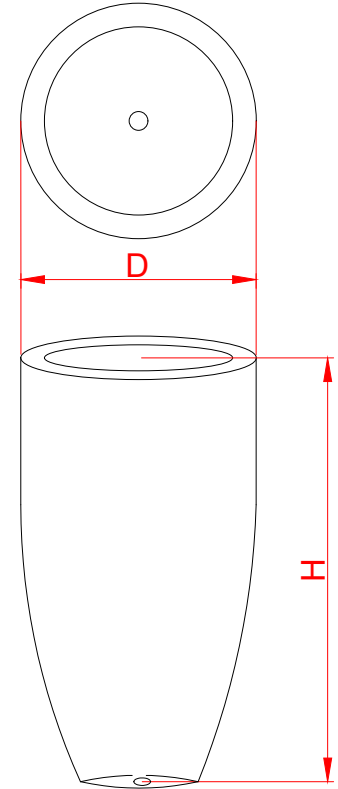
Optional raised bottom

Vase

DxH (cm)	Volume (Full)
50x90	176,70 Lt



Trendy

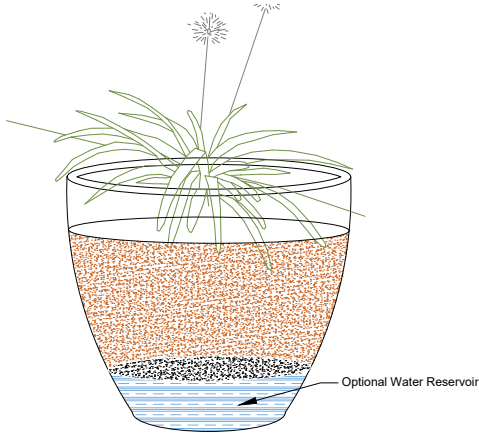
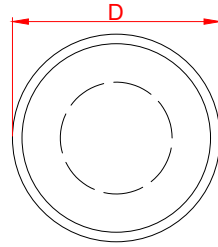
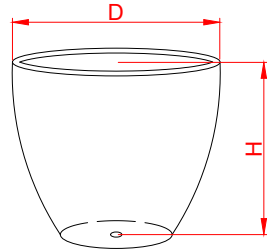


Optional raised bottom

E g g

Standart Ölçüler Standart Dimensions Standart Maße

DxH (cm)	Volume (Full)
36x31	31,55 Lt
45x38	60,44 Lt
55x46	109,29 Lt
65x54	179,19 Lt
40x35	43,90 Lt
60x40	113,10 Lt
60x55	155,50 Lt
80x45	226,19 Lt
80x70	351,86 Lt
95x80	567,05 Lt



Es handelt sich um dekorative Blumentöpfe, die Sie sowohl drinnen als auch draußen verwenden können, wo Sie problemlos auch große Pflanzen haben können und die moderner und eleganter aussehen als der Zylinder. Rundkegelblumentöpfe, die Sie drinnen und draußen verwenden können, werden von Gartenbauarchitekten bevorzugt, insbesondere zum Pflanzen großer Flächen und zum Pflanzen sehr großer Gewächse und Bäume. Sie sind häufig bevorzugt, insbesondere in Gebäuden mit großen Flächen wie Einkaufszentren, Hotels und Flughäfen. Aufgrund ihrer Glasfaserstruktur hält es Ihre Pflanzen jahrelang zu Hause, ohne von äußeren Wetterbedingungen beeinflusst zu werden. Wie bei allen unseren anderen Blumentöpfen bieten unsere zylindrischen Blumentöpfe äußerst viele Optionen in Bezug auf Farbe und Größe.

B o w l

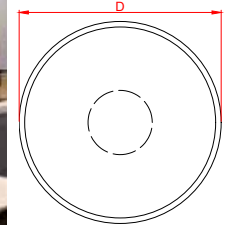
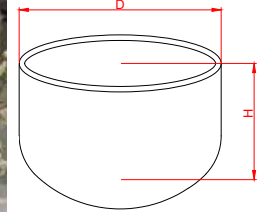
DxH (cm)	Volume (Full)
80x47	236,25 Lt
94x56	388,63 Lt
110x65	617,72 Lt

Hem iç hem de dış mekanlarda kullanabileceğiniz, büyük bitkileri de rahatça dikebileceğiniz, silindiregöre daha modern ve zarif görünümlü dekoratif saksılardır. İç ve dış mekanlarda rahatlıkla kullanabileceğiniz yuvarlak konik saksılar peyzaj mimarları tarafından özellikle geniş alanların bitkilendirilmesinde ve çok büyük bitki ve ağaçların dikimi için tercih edilir. Özellikle AVM, otel, havaalanı gibi geniş alanlara sahip binalarda çok sıkça talep görürler. Fiberglas yapısından dolayı dış hava şartlarından etkilenmeden yıllarca özelliğini koruyarak bitkilerinize ev sahipliği yapar. Diğer tüm saksılarımızda olduğu gibi yuvarlak konik saksılarımız da renk ve boyut açısından son derece fazla seçeneklere sahiptir.



With a more modern and elegant appearance than the cylinder, they are decorative pots that you can use both indoors and outdoors, where you can easily plant large plants. Tapered round pots that you can easily use indoors and outdoors are preferred by landscape architects especially for planting large areas and planting very large plants and trees. They are frequently in demand especially in buildings with large areas such as shopping malls, hotels, airports, etc. Due to its fiberglass structure, it keeps its properties for years without being affected by external weather conditions and hosts your plants. Like all our other pots, our cylindrical pots have also extremely many options in terms of color and size.

Sun Teknik Fiberglass



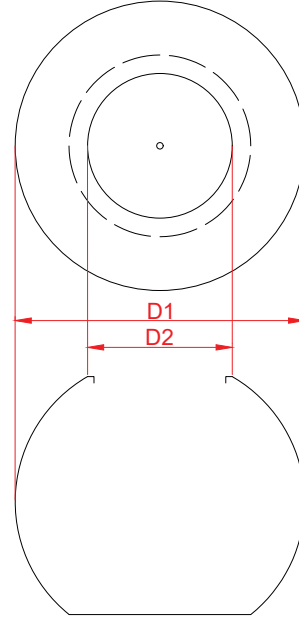
Sphere

Standart Ölçüler

Standart Dimensions

Standart Maße

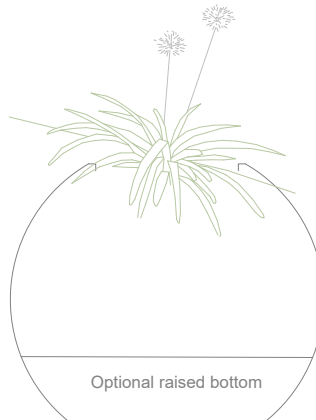
D1 (cm)	D2 (cm)	H (cm)	Volume (Full)
50	23	42	78,54 Lt
70	33	57	192,42 Lt
90	45	74	445,32 Lt



İç ve dış mekanlarınız için klasik ama şık bir seçenek.

A classic yet stylish option for your indoor and outdoor spaces.

Eine klassische und dennoch stilvolle Option für Ihre Innen- und Außenbereiche.



Willshire

DxH (cm)	Volume (Full)
102x102x76	790,00 Lt



Sun Teknik

Fiberglass



Tulip

DxH (cm)	Volume (Full)
73x69	285,00 Lt



P o l i - C o r t e n

Sun Teknik
F i b e r g l a s



Fiberglass inside, Corten outside

Rusty surface and appearance

Real iron powder surface

Much lighter than Corten pots

Rust color changing over time with weather conditions

Indoor and outdoor use

Wheel, water reservoir and plug options on suitable models

With all the advantages of fiberglass pots

İçi Fiberglass , dışı Corten

Paslı yüzey ve görünüm

Gerçek demir tozu yüzey

Corten saksılara göre çok daha hafif

Hava şartlarıyla zaman içinde değişen pas rengi

İç ve dış mekan kullanımı

Uygun modellerde tekerlek, hazne ve tıpa opsiyonları

Fiberglas saksıların tüm avantajlarıyla

Group

Sun Teknik
F i b e r g l a s

Standart Ölçüler

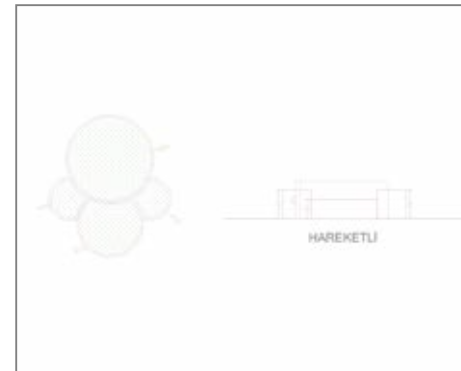
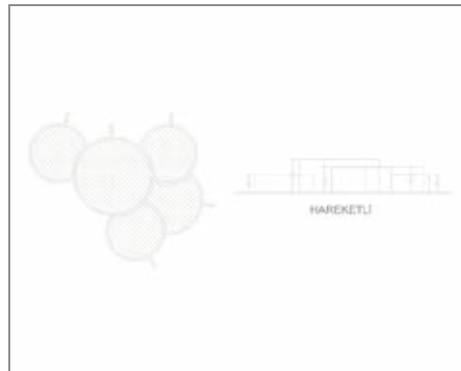
Standart Dimensions

Standart Maße



Özellikle otel, cafe restaurantlarınızın geniş bahçe ve teraslarını hem bitkilendirip hem de şık ve temiz ortamlara dönüştürülebileceğiniz 2'li, 3lü, 4lü ve 5'li silindir gruplarıdır. İsteddiğiniz bölümlerini stand ya da oturma ünitesi halinde üretme seçeneğimiz de mevcuttur.

They are 2-, 3-, 4- and 5-cylinder groups that you can both plant and transform the large gardens and terraces of your hotels, cafe restaurants into stylish and clean environments. We also have the option to produce the parts you want as a stand or sitting unit.



Es sind 2-, 3-, 4- und 5-Zylinder-Gruppen, mit denen Sie die großen Gärten und Terrassen Ihrer Hotels, Café-Restaurants bepflanzen und in stilvolle und saubere Umgebungen verwandeln können. Wir haben auch die Möglichkeit, die von Ihnen gewünschten Teile als Stand- oder Sitzeinheit zu fertigen.

Sun Technic Fiberglas San. Ve Tic. Ltd. Őti.

Tepeören Mah. Turgut Reis Cad. No:13
34959 Tuzla / İstanbul
Tel: +90 216 661 1907

TÜRKİYE

www.sunteknik.com.tr



Sun Teknik
F i b e r g l a s



✉ info@sunteknik.com.tr

📷 [@sunteknik_fiberglas](https://www.instagram.com/sunteknik_fiberglas)

📘 [@sunteknikfiberglas](https://www.facebook.com/sunteknikfiberglas)

Fiberglass Planter
Fiberglas Pflanzkübel